



THE GROUNDS

- A VISITOR CENTER** | Starting point for all visits and location of the restrooms, museum store, café, Speyer Gallery and Hillman Education Pavilion.
- B THE MEADOW** | Open space with cutting gardens and an apple orchard.
- C GARDENER'S COTTAGE** | Original residence of Fallingwater's gardener and now staff offices.
- D BEAR RUN** | Stream running under Fallingwater and designated by Pennsylvania as an Exceptional Value waterway.
- E THE HOUSE** | Fallingwater, the name coined by architect Frank Lloyd Wright for the Kaufmann's weekend house. See over >>>
- F QUARRY** | Source for Pottsville sandstone used in the construction of the house's stone walls.
- G VIEW** | Iconic view that shows the house in harmony with its site.
- H BIRD'S-EYE VIEW** | Overlook that shows the cascading levels of the house.
- I PARADISE OVERLOOK TRAIL** | 1/2-mile, out-and-back trail providing a spectacular view of the Youghiogheny River gorge. Difficulty: easy.
- J LOWER BEAR RUN TRAIL** | 1-mile, out-and-back trail that follows along Bear Run to its end at the Youghiogheny River. Difficulty: moderate.

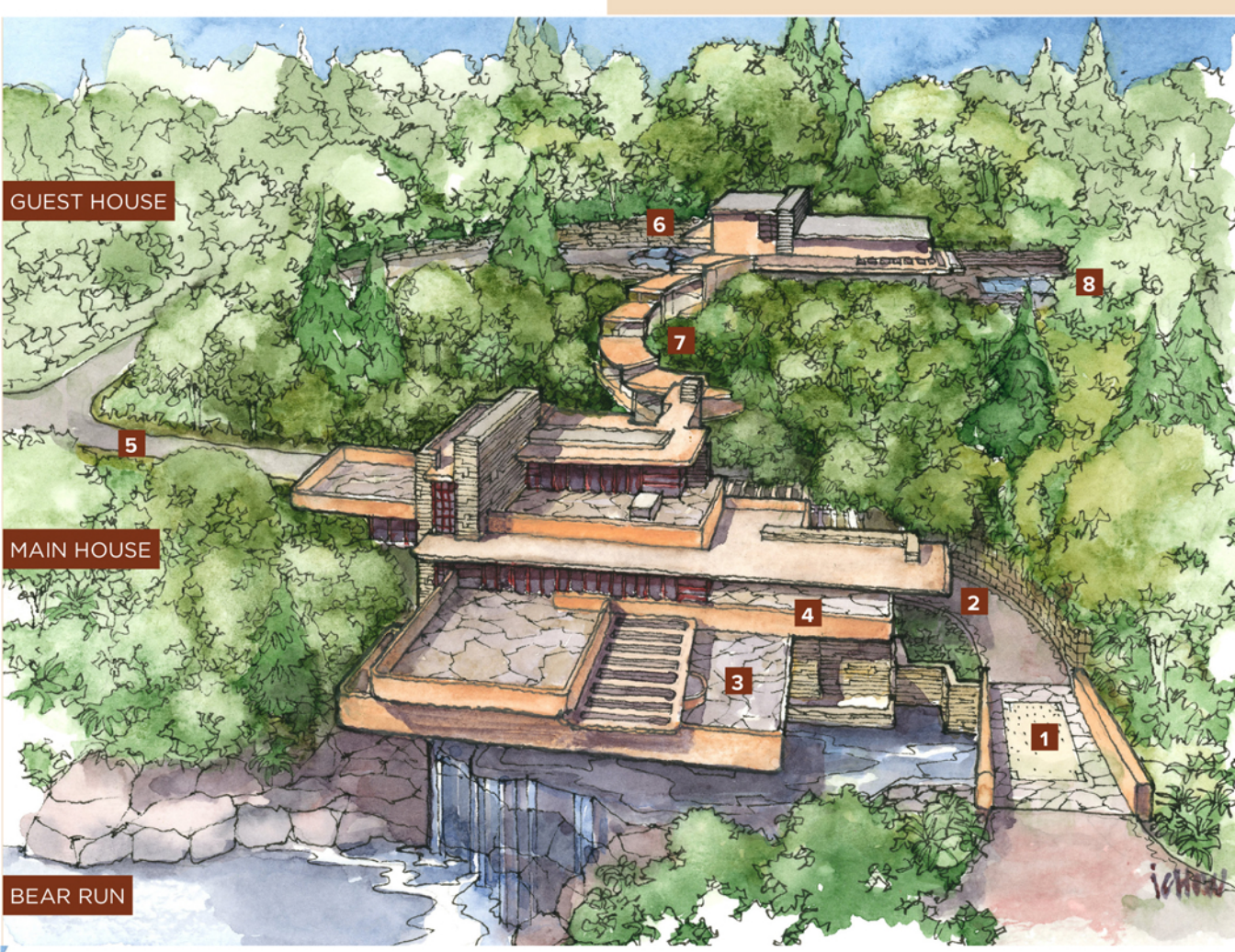
HISTORY



Edgar Jonas Kaufmann (1885-1955) was the patriarch of a prominent Pittsburgh family and owner of Kaufmann's Department Store. Edgar and his wife Lilliane (1889-1952) traveled in international circles and sought out the company of artists, architects, and other creatives throughout their lives. Edgar Kaufmann jr. (1910-1989), their only child, was equally progressive and served as the catalyst for his family's relationship with Frank Lloyd Wright. In 1934, he joined the Taliesin Fellowship, a communal architecture program created by Wright, and it was during a visit to Taliesin that his parents first met the architect. Soon after, they commissioned Wright to design Fallingwater.



Frank Lloyd Wright was a prolific American architect who designed more than 1,000 structures, 532 of which were realized. Over a career that spanned seven decades before his death in 1959, Wright changed the way we build and live by creating some of the world's most innovative spaces. His visionary work cemented his place as one of the greatest American architects of all time. Fallingwater best exemplifies Wright's philosophy of organic architecture: the harmonious union of art and nature.

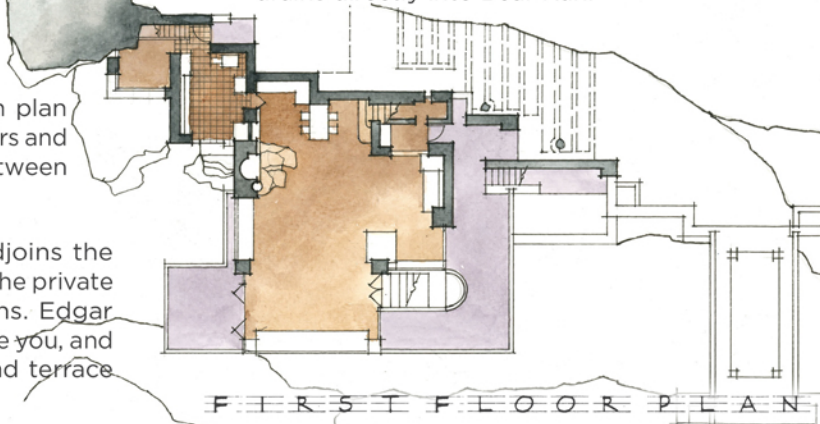


THE HOUSE

Fallingwater is a house dedicated to outdoor living - a retreat from the hectic lifestyle that the Kaufmanns led in Pittsburgh. Immediately hailed as a modern masterpiece, its unique cantilevered construction introduced a new freedom in structural expression. The family used Fallingwater until 1963, when Edgar Kaufmann jr. entrusted it to the Western Pennsylvania Conservancy.

- 1 BRIDGE** | From the bridge, you can observe that the house is a stack of cantilevered concrete trays designed to hover above Bear Run.
- 2 ENTRY** | Wright employed compression and release in the design of Fallingwater. Walk under the trellis toward the main entrance and turn left onto the east terrace. Observe the sensation of being compressed, then released.
- 3 EAST TERRACE** | Peer into the open plan living room. Imagine all the terrace doors and windows open, blurring the lines between the indoors and outdoors.
- 4 POTTERY TERRACE** | This terrace adjoins the guest bedroom and was intended as the private terrace for guests of the Kaufmanns. Edgar Kaufmann jr. used the third floor above you, and the Kaufmann's master bedroom and terrace are directly above the living room.

- 5 DRIVEWAY** | The gravel driveway predates Fallingwater, which means Wright decided to incorporate it into his design.
- 6 CARPORT** | Glass screens now enclose three of the four original carports. Above the carports are servants' quarters for the Kaufmann's staff.
- 7 CANOPIED WALKWAY** | Wright linked the guest house to the main house with this graceful but structurally ingenious canopied walkway supported by posts only on one side. The canopy design is a cascade reminiscent of the waterfalls.
- 8 SWIMMING POOL** | This pool was a favorite spot of the Kaufmanns on hot summer days. Over six feet deep, its cantilevered stone steps lead down into the water. Fed by a natural spring, the pool drains directly into Bear Run.



FIRST FLOOR PLAN