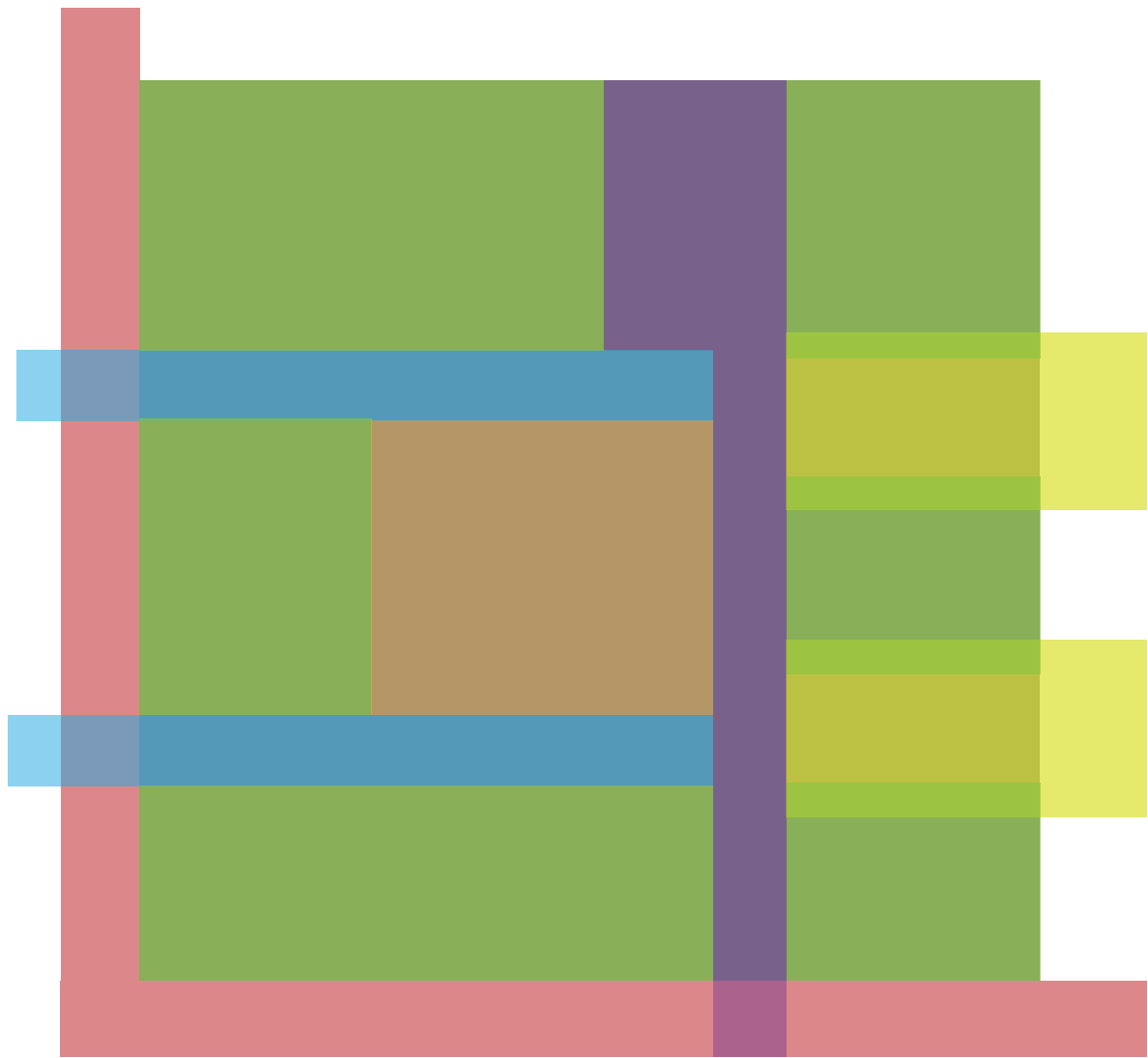


Center for the Advancement of American Architecture at Fallingwater



Exterior View

Our design approach to the site was treating the site area as a rectangular volume. Connecting two parallel paths to the barn, we establish a strong relationship with the volume. This leaves us with three sides to the volume where we grouped the program details into three categories: Education, Retail, and Exhibition. These categories are also strongly bonded together with the transitional layer of the courtyard. The program details are then interwoven.



Concept Statement

Modern Vernacular: In Search of American Architecture

Ben Kollmann, Reba Shoup, Lydia Noll, Gilbert Abu-Boampong



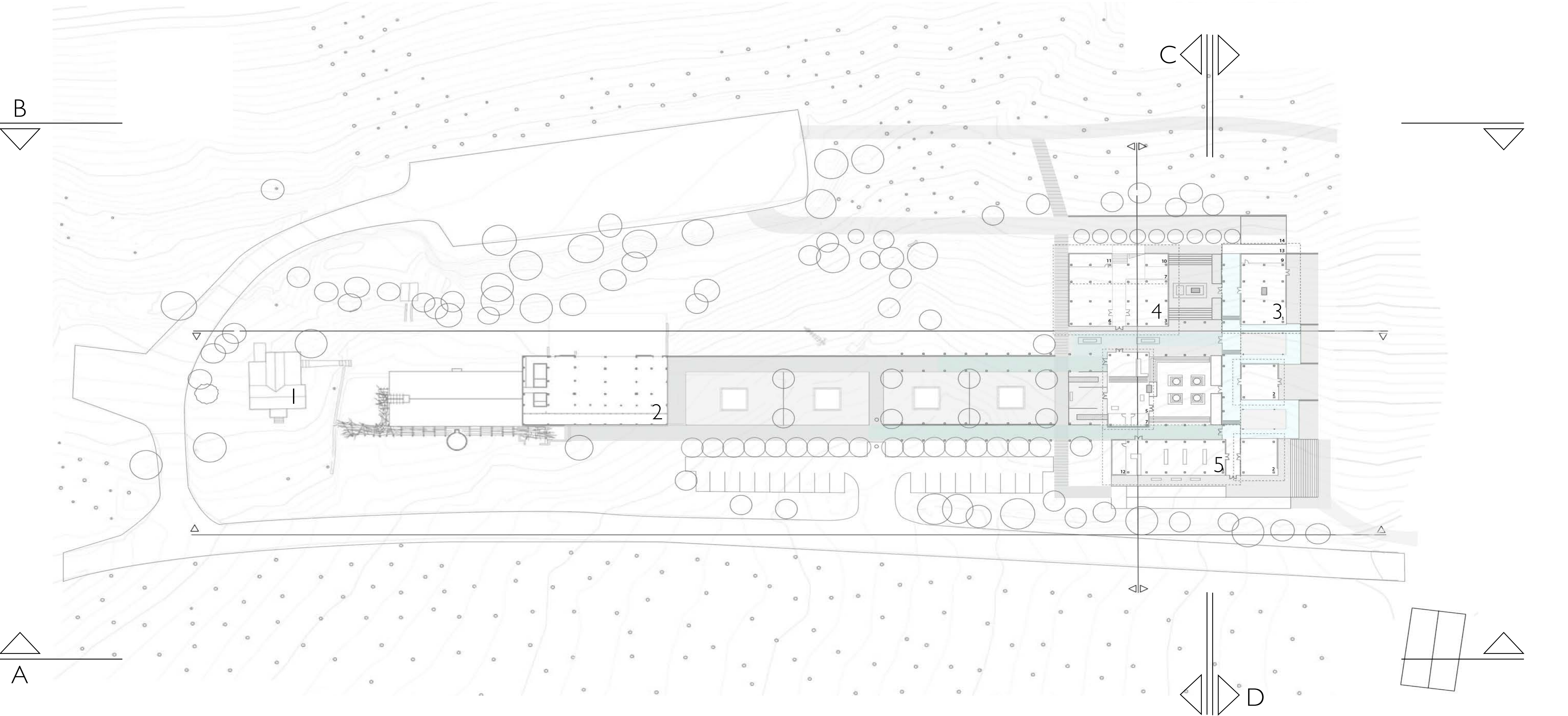
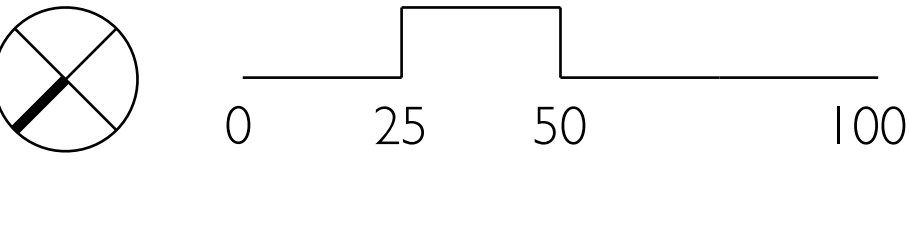
Exterior View



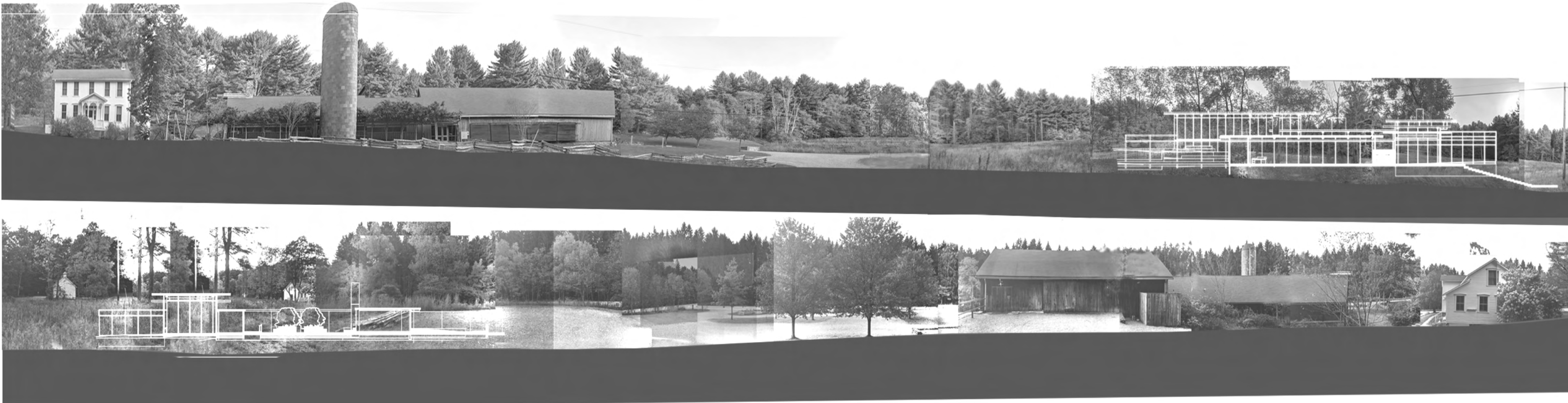
Aerial View



- Legend
- 1. Farmhouse
 - 2. Barn
 - 3. Gallery
 - 4. Education
 - 5. Retail



Site Plan



South Site Section A

North Site Section B



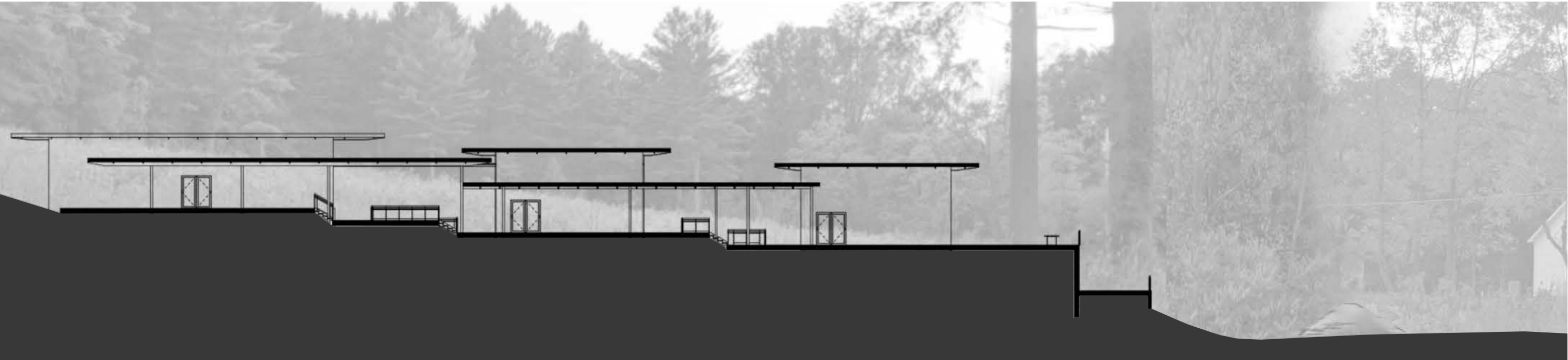
West Elevation



N/S Section (C)



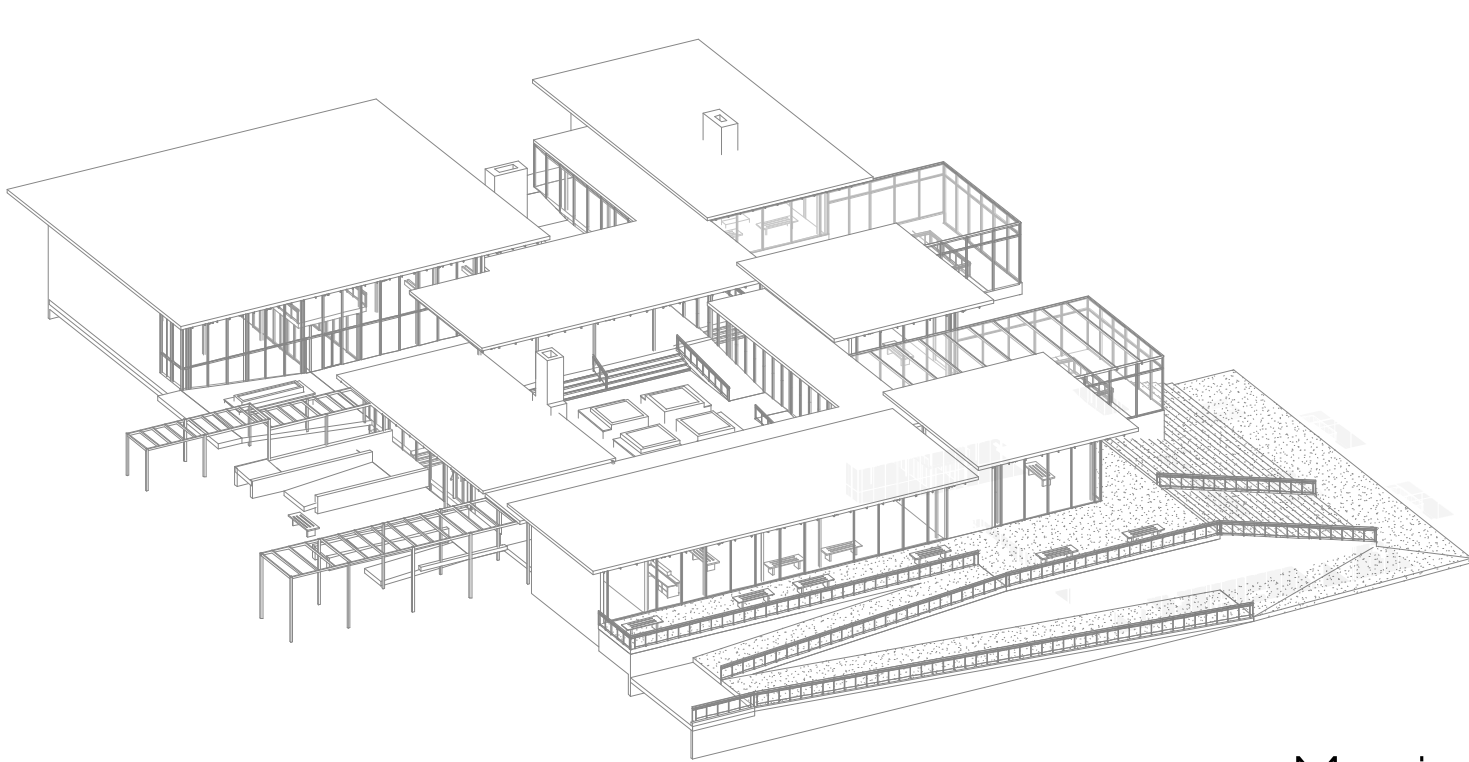
South Elevation



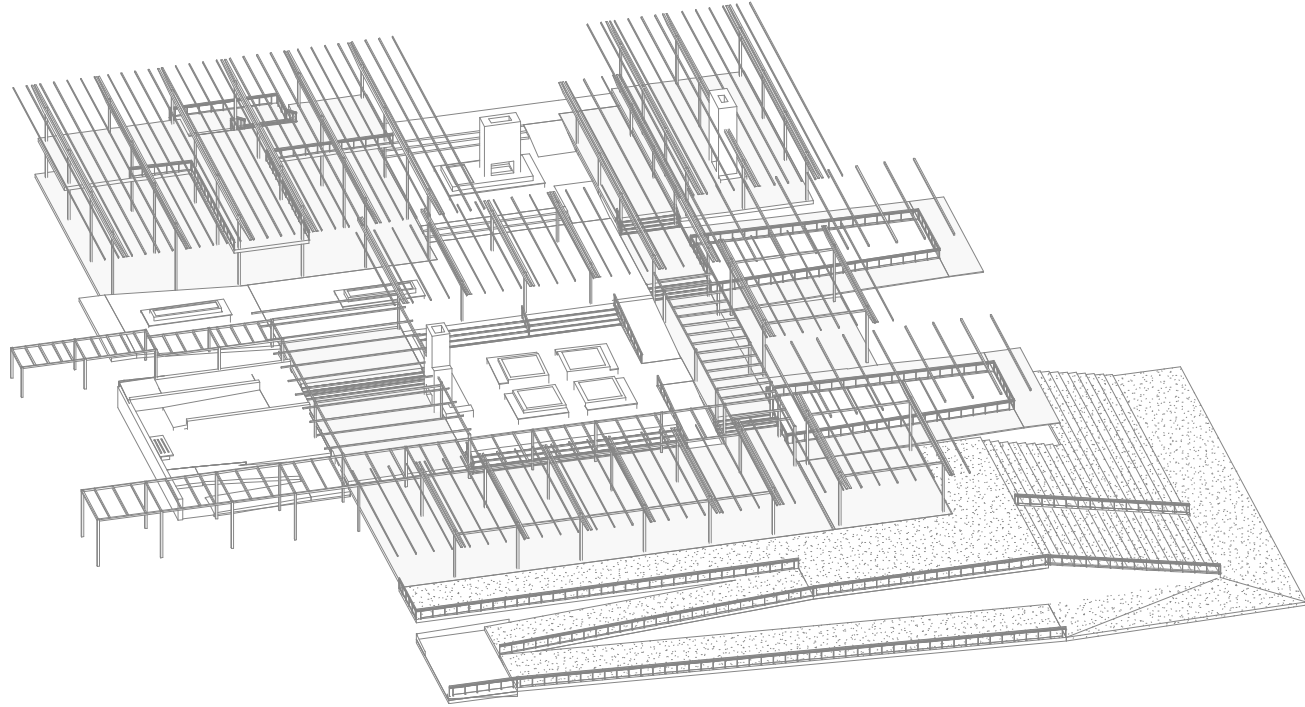
Short Section (D)



North Elevation

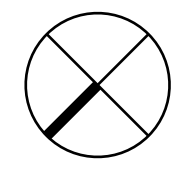


Massing



Framing

- Legend
- 1. Major Gallery
 - 2. Minor Gallery
 - 3. Flex Activity Space
 - 4. Bookstore
 - 5. Coffee Bar
 - 6. Training/ Resource
 - 7. Restrooms
 - 8. Staff Office
 - 9. Breakroom
 - 10. Storage
 - 11. Mechanical
 - 12. Janitorial
 - 13. Loading Dock



Ground Plan



Courtyard Rendering



View out from the Gallery Walkway



View into the Gallery Walkway

Site Walk



Pathway from Parking Lot



View of Cafe and Education from Entrance



View into the Bookstore from Interior Walkway



View into the Courtyard from Interior Walkway



View from Gallery Walkway

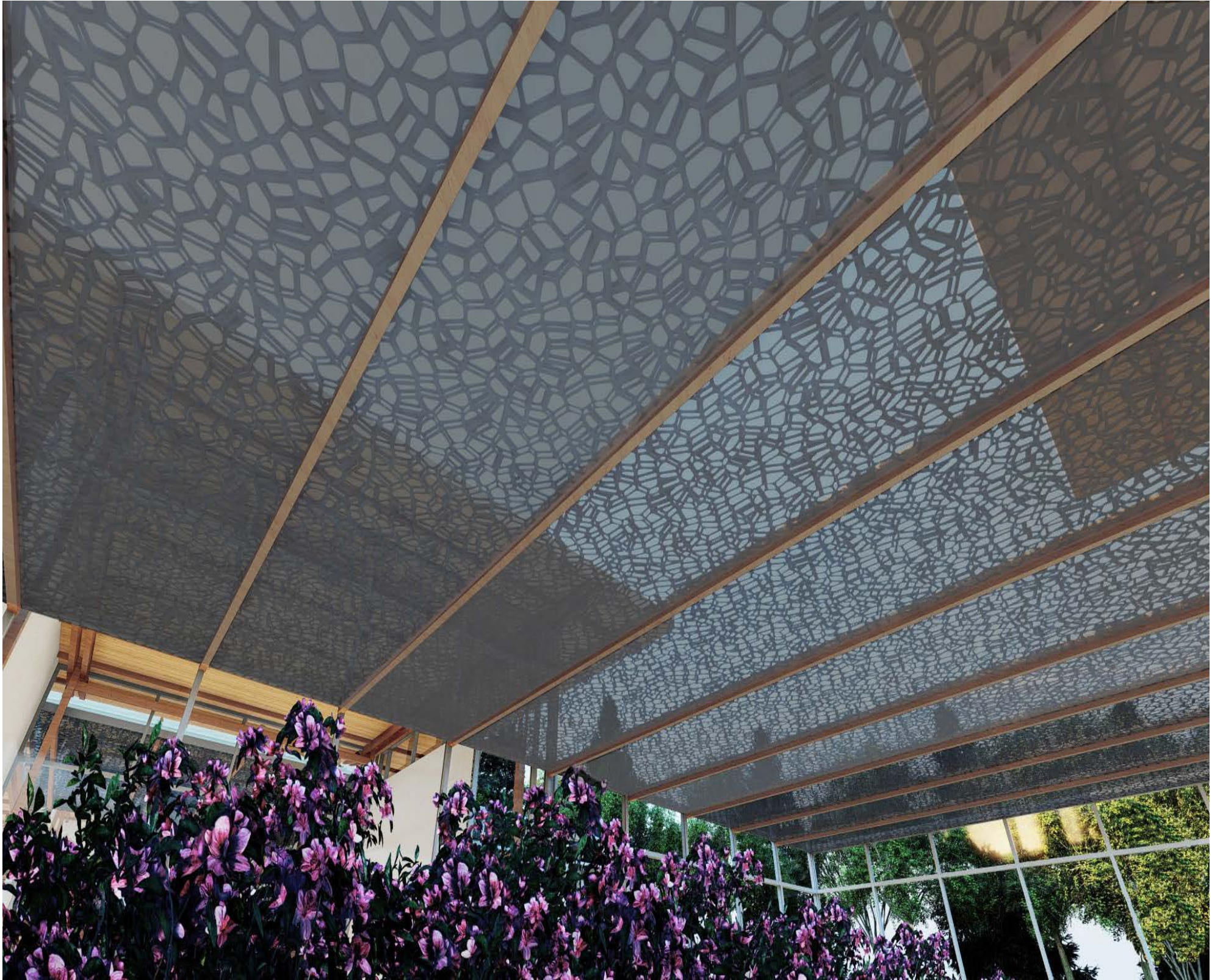


View from Second Pathway on the Other Side of the Cafe

Additional Renderings



Interior Perspective View



Key Element



Interior Perspective View



Construction Detail